

TABLE OF CONTENTS

SECTION 1—INTRODUCTION	1
SECTION 2—Population Trends	1
SECTION 3—Population PROJECTIONS	7
SECTION 4—Population dENSITY	9
SECTION 5—CHARACTERISTICS OF THE POPULATION	12
5.1 ~ Age Distribution	12
5.2 ~Race and Ethnicity.....	17
5.3 ~ Education	18
5.4 ~ Persons with Disabilities	19
SECTION 6—References.....	20

TABLES

Table X.1: 100 Years of Population Counts (1910-2010)	2
Table X.2: Regional Population Trends (1960-2010)	3
Table X.3: Brookline Population Growth: Migration vs. Natural Increase (1970 – 2010)	4
Table X.4: Regional Population Growth: Migration vs. Natural Increase (1990 – 2010).....	6
Table X.5: Brookline Population Projections (2015 – 2040)	7
Table X.6: Regional Population Projections (2015 – 2040).....	8
Table X.7: Regional Population Density (1970 – 2010).....	11
Table X.8: Brookline Age Distribution (1990 – 2010).....	12
Table X.9: Regional 2010 Census Age Distribution	15
Table X.10: Regional Median Age	16
Table X.11: Regional 2010 Census Race.....	17
Table X.12: Regional 2010 Census Ethnicity	18
Table X.13: Brookline Educational Attainment for the Population 18 years and Older (1990 – 2010)	19
Table X.14: Regional Educational Attainment for the Population 18 years and Older	19

CHARTS

Chart X.1: % Change in Census Population (1910-2010)	2
Chart X.2: Brookline Births and Deaths (1970 – 2009)	4
Chart X.3: Brookline Population Growth and Migration (1970 – 2010)	5
Chart X.4: Brookline Actual (1940 – 2010) and Projected (2020 – 2040) Population	8
Chart X.5: Brookline Population Density (1970 – 2010)	9
Chart X.6: Regional 2010 Population Density	11
Chart X.7: Brookline Age Distribution (1990 – 2010).....	13
Chart X.8a: Brookline 2010 Census Population Age Distribution by Gender	13
Chart X.8b: Brookline 2000 Census Population Age Distribution by Gender	14

SECTION 1—INTRODUCTION

The Demographics Chapter provides a statistical and descriptive profile of the demographics of Brookline, including significant features of historical and future growth. The demographic data were generated by the United States Census Bureau; population projections were generated by the Nashua Regional Planning Commission (NRPC) with input from Brookline officials.

The most recent decennial census, conducted in 2010, collected information on population counts, age, sex, race, ethnicity, and household information. The major change from the last U.S. Census in 2000 is the elimination of the “long form,” sent to roughly 1 in 6 addresses nationwide. That questionnaire, which asked very specific questions regarding income, housing, commuting, and more, has been replaced by the American Community Survey (ACS). The is an ongoing survey that provides data every year in the form of 1-, 3- and 5-year period estimates representing the population and housing characteristics over a specific data collection period. The ACS differs from the decennial Census. The Census shows the *number* of people who live in an area by surveying the total population every 10 years. The ACS shows *how* people live by surveying about three million addresses every year. It is designed to provide *estimates* that describe the average characteristics of an area over a specific time period.¹

ACS collects and releases data by the calendar year for geographic areas that meet specific population thresholds; one-year estimates are published for areas with populations of 65,000 or more; three-year estimates are published for areas with populations of 20,000 or more; and five-year estimates are published for areas with populations of less than 20,000, such as Brookline. The 2006 – 2010 ACS 5-year estimates, which represent data collected between January 1, 2006 and December 31, 2010, are used in this chapter. The source of each table and chart is provided and indicates whether the data is from the decennial census or the 2006 – 2010 ACS. The specific Census and ACS tables used for this chapter are listed in Section 6 – References.

SECTION 2—POPULATION TRENDS

Brookline’s population grew rapidly over the last fifty years; there were just under 800 people counted in Brookline during the 1960 Census and just under 5,000 in the 2010 Census. The largest population increase during that time was between 1990 and 2000, when Brookline grew over 73%. This represents one of the largest percent increases of any community in New Hampshire during that decade and the largest increase of any community over 500 people. However, that rate of growth slowed according to the 2010 Census, which showed a 19% increase in Brookline’s population. This trend is similar to the trend across the NRPC region, Hillsborough County, the state, and the country, which all experienced lower population growth rates between 2000 and 2010 than between 1990 and 2000, as shown on Table X.1 and the associated graph below. The annual percent growth rate between 2000 and 2010 is

¹ As all ACS data are survey *estimates*, the Census Bureau publishes a margin of error (MOE) for every ACS estimate. Additional information on the US Census, ACS and Margins of Error is available at:
http://www.census.gov/acs/www/guidance_for_data_users/guidance_main/

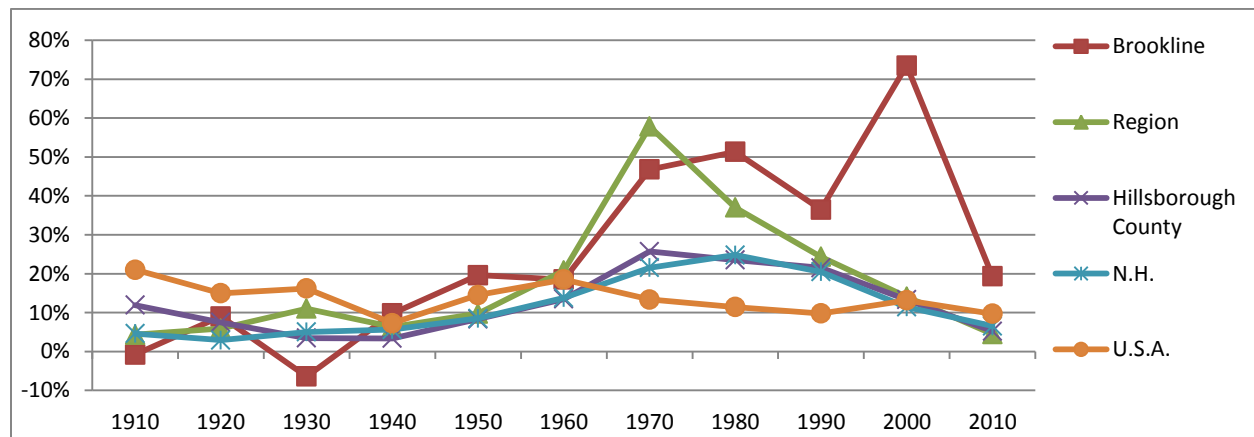
1.8% per year; this is down from 5.7% per year between 1990 and 2010. Over the last fifty years, the annual percent growth rate in Brookline is 3.7%, which is significantly higher than the annual percent growth rate for the region (2.35%), the County (1.63%), and the State (1.56%).

Table X.1: 100 Years of Population Counts (1910-2010)

Year	Brookline		Region		Hillsborough Co.		New Hampshire		USA	
	Count	Change	Count	Change	Count	Change	Count	Change	Count	Change
1910	501		38,792		126,072		430,572		92,228,496	
1920	546	9.0%	41,074	5.9%	135,512	7.5%	443,083	2.9%	106,021,537	15.0%
1930	511	-6.4%	45,601	11.0%	140,165	3.4%	465,293	5.0%	123,202,624	16.2%
1940	561	9.8%	48,463	6.3%	144,888	3.4%	491,524	5.6%	132,164,569	7.3%
1950	671	19.6%	53,188	9.7%	156,987	8.4%	533,242	8.5%	151,325,798	14.5%
1960	795	18.5%	64,242	20.8%	178,161	13.5%	606,921	13.8%	179,323,175	18.5%
1970	1,167	46.8%	101,380	57.8%	223,941	25.7%	737,681	21.5%	203,302,031	13.4%
1980	1,766	51.3%	138,881	37.0%	276,608	23.5%	920,610	24.8%	226,542,199	11.4%
1990	2,410	36.5%	172,690	24.3%	336,073	21.5%	1,109,252	20.5%	248,718,302	9.8%
2000	4,181	73.5%	196,935	14.0%	380,841	13.3%	1,235,786	11.4%	281,424,603	13.1%
2010	4,991	19.4%	205,765	4.5%	400,721	5.2%	1,316,470	6.5%	308,745,538	9.7%

Source: U.S. Census Bureau Decennial Census

Chart X.1: % Change in Census Population (1910-2010)



Source: U.S. Census Bureau Decennial Census

Table X.2 shows population changes since 1960 for each community in the NRPC region, as well as for two adjacent Massachusetts communities. While the NRPC region as a whole experienced rapid growth in population and housing in the last four decades of the 20th century, the first decade of the 21st century saw a decline in those growth rates. The region's population grew over 57% between 1960 and 1970, but only 4.5% between 2000 and 2010, as shown in the table below. And while growth rates have been steadily decreasing for both Hillsborough County and the State, the 2010 Census showed the first decade where the region's percent growth was lower than either Hillsborough County's or the State's. Although Brookline's growth did slow, Table X.2 shows its population is still increasing at a higher rate than most of the other communities in the area.

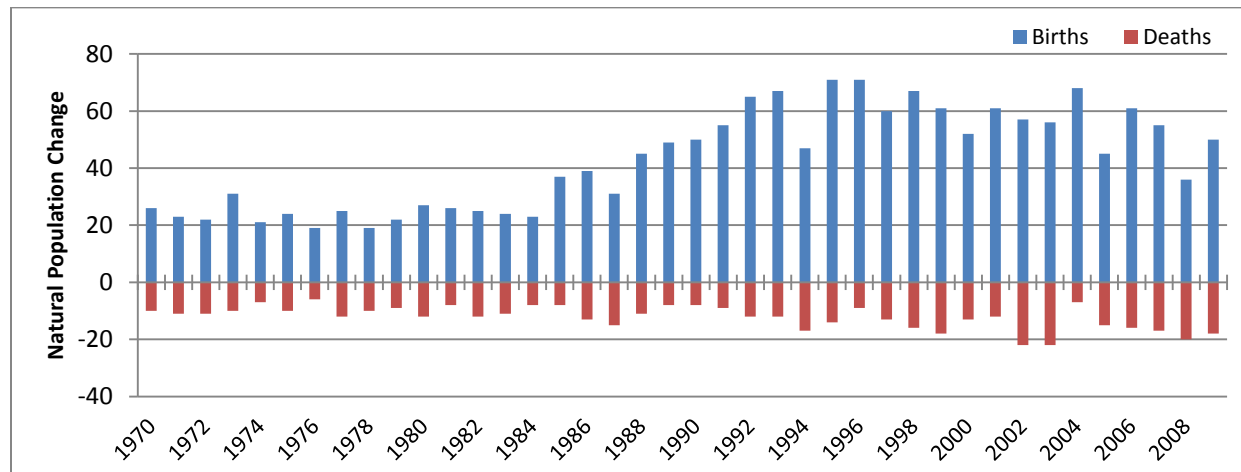
Table X.2: Regional Population Trends (1960-2010)

Community	1960	1970		1980		1990		2000		2010	
	Count	Count	Change	Count	Change	Count	Change	Count	Change	Count	Change
Amherst	2,051	4,605	124.5%	8,243	79.0%	9,068	10.0%	10,769	18.8%	11,201	4.0%
Brookline	795	1,167	46.8%	1,766	51.3%	2,410	36.5%	4,181	73.5%	4,991	19.4%
Hollis	1,720	2,616	52.1%	4,679	78.9%	5,705	21.9%	7,015	23.0%	7,684	9.5%
Hudson	5,876	10,638	81.0%	14,022	31.8%	19,530	39.3%	22,928	17.4%	24,467	6.7%
Litchfield	721	1,420	96.9%	4,150	192.3%	5,516	32.9%	7,360	33.4%	8,271	12.4%
Lyndeborough	594	789	32.8%	1,070	35.6%	1,294	20.9%	1,585	22.5%	1,683	6.2%
Mason	349	518	48.4%	792	52.9%	1,212	53.0%	1,147	-5.4%	1,382	20.5%
Merrimack	2,989	8,595	187.6%	15,406	79.2%	22,156	43.8%	25,119	13.4%	25,494	1.5%
Milford	4,863	6,622	36.2%	8,685	31.2%	11,795	35.8%	13,535	14.8%	15,115	11.7%
Mont Vernon	585	906	54.9%	1,444	59.4%	1,812	25.5%	2,034	12.3%	2,409	18.4%
Nashua	39,069	55,820	42.9%	67,865	21.6%	79,662	17.4%	86,605	8.7%	86,494	-0.1%
Pelham	2,605	5,408	107.6%	8,090	49.6%	9,408	16.3%	10,914	16.0%	12,897	18.2%
Wilton	2,025	2,276	12.4%	2,669	17.3%	3,122	17.0%	3,743	19.9%	3,677	-1.8%
Pepperell, MA	4,336	5,887	35.8%	8,061	36.9%	10,098	25.3%	11,142	10.3%	11,497	3.2%
Townsend, MA	3,650	4,281	17.3%	7,201	68.2%	8,496	18.0%	9,198	8.3%	8,926	-3.0%
NRPC Region	68,578	107,267	56.4%	146,942	37.0%	182,788	24.4%	196,935	7.7%	205,765	4.5%
Hillsborough Co.	178,161	223,941	25.7%	276,608	23.5%	336,073	21.5%	380,841	13.3%	400,721	5.2%
New Hampshire	606,921	737,578	21.5%	920,475	24.8%	1,109,252	20.5%	1,235,786	11.4%	1,316,470	6.5%

Source: U.S. Census Bureau Decennial Census

Population changes in a community may be attributed to two factors: natural population changes due to births and deaths, and population changes due to individuals moving into a community (in-migration) or out of a community (out-migration). Net migration is calculated by subtracting the past Census population and the decade's natural population change from the more recent census population. Birth and death data from 1970 – 2009 is provided in the chart below. These data were used with the Census data to calculate net migration rates over the last four decades, as show in Table X.3 and the associated chart.

Chart X.2: Brookline Births and Deaths (1970 – 2009)

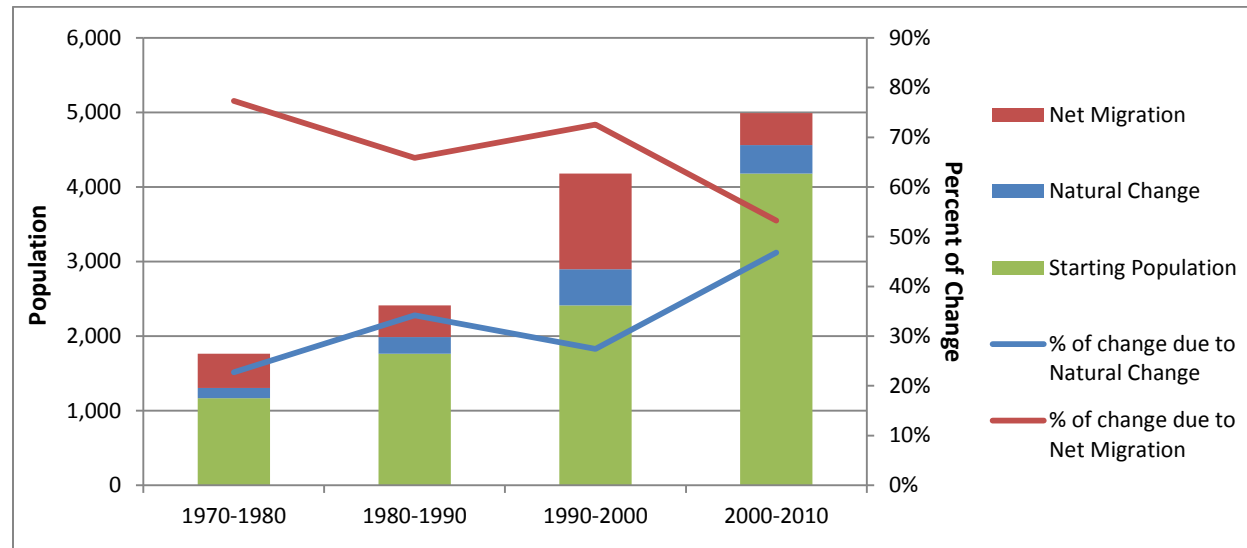


Source: NH Department of Health and Human Services (DHHS) Health Statistics and Data Management Section

Table X.3: Brookline Population Growth: Migration vs. Natural Increase (1970 – 2010)

Decade	Starting Population	Ending Population	Change	Births	Deaths	Natural Change (births - deaths)		Net Migration	
						Total	% of Change	Total	% of Change
1970-1980	1,167	1,766	599	232	96	136	22.7%	463	77.3%
1980-1990	1,766	2,410	644	326	106	220	34.2%	424	65.8%
1990-2000	2,410	4,181	1,771	614	128	486	27.4%	1,285	72.6%
2000-2010	4,181	4,991	810	541	162	379	46.8%	431	53.2%

Source: U.S. Census Bureau Decennial Census, NH DHHS Health Statistics and Data Management Section

Chart X.3: Brookline Population Growth and Migration (1970 – 2010)

Source: U.S. Census Bureau Decennial Census, NH DHHS Health Statistics and Data Management Section

As the data above show, between 1970 and 2000, net in-migration was clearly a dominant factor in the population growth of Brookline. Between 1990 and 2000, net in-migration accounted for nearly 73% of the increase in population. The most recent decade, however, showed that nearly the same percentage of population growth was due to natural change as due to in-migration, at 46.8% and 53.2% respectively. Table X.4 below shows population changes due to natural growth and migration for all thirteen NRPC communities. Five of the thirteen communities in the NRPC region experienced net out-migration and overall, the region lost nearly 3,500 people due to out-migration. While the regional population is still increasing, the growth is no longer dominated by in-migration. The availability of affordable housing and jobs within the region are factors of in-migration rates and these factors are influenced by the national economy. When the national economy is strong and growing, housing starts and employment opportunities tend to increase both locally and regionally, and in-migration and population growth rise correspondingly. Conversely, during economic downturns, these factors decrease, as is evident in the table below.

Table X.4: Regional Population Growth: Migration vs. Natural Increase (1990 – 2010)

Community	1990 Census Population	1990 - 1999 Natural Population Change (Births - Deaths)	1990 - 1999 Population Change due to Net Migration*	2000 Census Population (Change)	2000 - 2009 Natural Population Change (Births - Deaths)	2000 - 2009 Population Change due to Net Migration*	2010 Census Population (Change)
Amherst	9,068 (+825)	609	1,092	10,769 (+1,701)	490	-58	11,201 (+432)
Brookline	2,410 (+644)	486	1,285	4,181 (+1,771)	379	431	4,991 (+810)
Hollis	5,705 (+1,026)	438	872	7,015 (+1,310)	187	482	7,684 (+669)
Hudson	19,530 (+5,508)	2,274	1,124	22,928 (+3,398)	1,589	-50	24,467 (+1539)
Litchfield	5,516 (+1,366)	1,029	815	7,360 (+1,844)	742	169	8,271 (+911)
Lyndeborough	1,294 (+244)	104	187	1,585 (+291)	66	32	1,683 (+98)
Mason	1,212 (+420)	78	-143	1,147 (-65)	84	151	1,382 (+235)
Merrimack	22,156 (+6,750)	2,567	396	25,119 (+2,963)	1,698	-1,323	25,494 (+375)
Milford	11,795 (+3,110)	948	792	13,535 (+1,740)	858	722	15,115 (+1,580)
Mont Vernon	1,812 (+368)	121	101	2,034 (+222)	112	263	2,409 (+375)
Nashua	79,662 (+11,797)	6,601	342	86,605 (+6,943)	5,003	-5,114	86,494 (-111)
Pelham	9,408 (+1,318)	860	646	10,914 (+1,506)	845	1,138	12,897 (+1,983)
Wilton	3,122 (+453)	239	382	3,743 (+621)	202	-268	3,677 (-66)
NRPC Region	172,690 (+33,809)	16,354	7,891	196,935 (+24,245)	12,255	-3,425	205,765 (+8,830)

Sources: U.S. Census Bureau Decennial Census, NH DHHS Health Statistics and Data Management Section

*Positive values = net in-migration; negative values = net out-migration.

SECTION 3—POPULATION PROJECTIONS

In order to best plan for future needs and conditions, it is necessary to understand the projected population change. Population projections are estimates of the population for future dates based on assumptions about future births, deaths, and net migration. Projected numbers are typically based on an estimated population consistent with the most recent decennial census, projected forward using statistical models.

Across New Hampshire, there are two current trends having an impact on population projections: declining net migration and natural population decreases. A lower net migration and decreasing natural population change typically result in lower overall growth rates. While these trends are likely to slow the growth experienced in past decades, Brookline has a relatively small population residing in a community with vacant land available for development and the potential for subdivision activity to occur (see the Land Use Chapter for more detail). There are also the unforeseen circumstances that inevitably occur, which influence the rate of growth in a community and therefore the projected population. Population projections for a given future date should be reviewed as changes to factors that contribute to growth are experienced within the community and region.

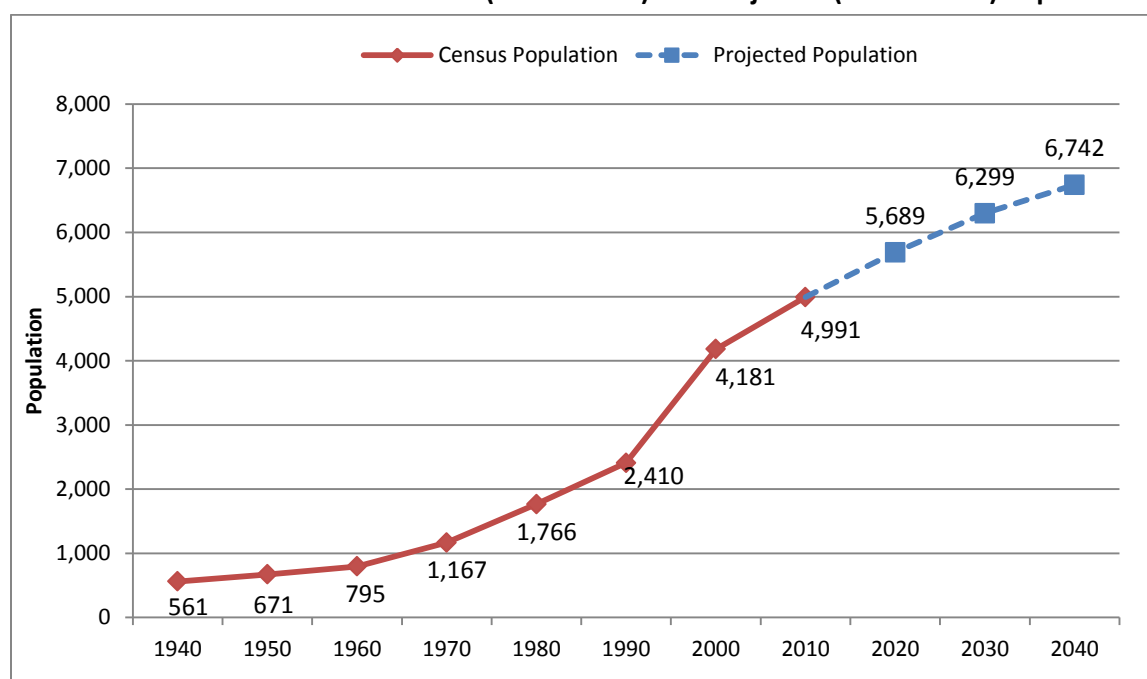
Because it is essential that the Master Plan identify reasonable expectations of future growth in population, the following projections prepared by the Nashua Regional Planning Commission (NRPC), with the input of Brookline officials, represent the best professional judgment of future growth within Town. NRPC developed a population projection model, utilizing the Cohort Component Method, for each town in the NRPC Region. The model's base data includes the 2010 U.S. Census population for each town and births and deaths data provided by the New Hampshire Department of Health and Human Services (DHHS). Additionally, survival rates were derived from life table data also provided by the NH DHHS. To complete the required base data needed to run the projection model, NRPC coordinated with town officials, including those in Brookline, to generate unique projected net migration rates for each town.

Though slower than previous decades, strong growth is still expected to continue in Brookline through the next decade, as shown in Table X.5 below. However, as the base population grows, the Town's growth rate will decline.

Table X.5: Brookline Population Projections (2015 – 2040)

Year	Projection	
	Population	% Change
2015	5,344	7.1%
2020	5,689	6.5%
2025	6,010	5.6%
2030	6,299	4.8%
2035	6,542	3.9%
2040	6,742	3.1%

Source: NRPC, NH DHHS Health Statistics and Data Management Section

Chart X.4: Brookline Actual (1940 – 2010) and Projected (2020 – 2040) Population

Source: NRPC, NH DHHS Health Statistics and Data Management Section

Note: To show consistent year intervals in the graph, projections for 2015, 2025 and 2035 are not displayed.

When compared to growth rates within the region, Brookline's projected growth rate through 2040 is still considerably higher than any other community in the region, as shown in Table X.6.

Table X.6: Regional Population Projections (2015 – 2040)

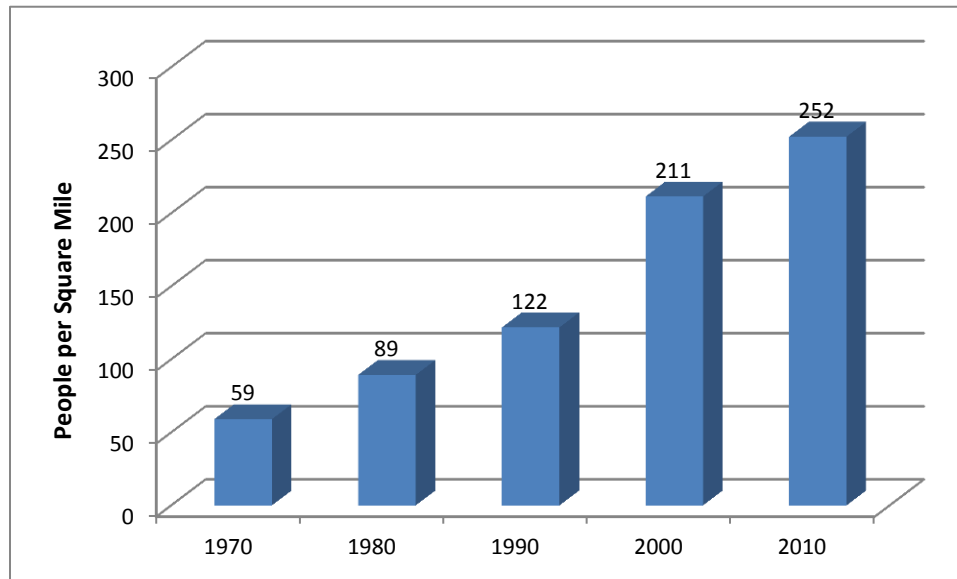
Municipality	Actual Count	Population Projection						Growth Rate		
	2010	2015	2020	2025	2030	2035	2040	2010-2040	2010-2020	2000-2010
Amherst	11,201	11,364	11,454	11,552	11,565	11,580	11,523	0.09%	0.22%	0.39%
Brookline	4,991	5,344	5,689	6,010	6,299	6,542	6,742	1.01%	1.32%	1.79%
Hollis	7,684	7,875	8,042	8,236	8,388	8,541	8,659	0.40%	0.46%	0.92%
Hudson	24,467	25,165	25,695	26,122	26,371	26,582	26,599	0.28%	0.49%	0.65%
Litchfield	8,271	8,572	8,811	9,091	9,315	9,573	9,768	0.56%	0.63%	1.17%
Lyndeborough	1,683	1,747	1,799	1,827	1,838	1,819	1,791	0.21%	0.67%	0.60%
Mason	1,382	1,458	1,525	1,566	1,587	1,577	1,547	0.38%	0.99%	1.88%
Merrimack	25,494	26,266	26,805	27,284	27,464	27,459	27,173	0.21%	0.50%	0.15%
Milford	15,115	15,819	16,447	16,905	17,472	18,068	18,048	0.59%	0.85%	1.11%
Mont Vernon	2,409	2,529	2,636	2,732	2,813	2,873	2,901	0.62%	0.90%	1.71%
Nashua	86,494	88,744	90,489	91,961	92,869	93,279	93,018	0.24%	0.45%	-0.01%
Pelham	12,897	13,661	14,353	15,040	15,636	16,225	16,700	0.87%	1.08%	1.68%
Wilton	3,677	3,786	3,871	3,927	3,957	3,953	3,921	0.21%	0.52%	-0.18%
NRPC Total	205,765	212,329	217,616	222,252	225,573	228,071	228,391	0.35%	0.56%	0.44%

Source: NRPC, NH DHHS Health Statistics and Data Management Section

SECTION 4—POPULATION DENSITY

Population density is also an instructive indicator of the growth of the Town. This statistic is calculated by dividing the number of persons residing in town by the total town area. According to the US Census Bureau, Brookline has about twenty square miles of land. With the 2010 population of 4,991, the current population density is 252 people per square mile. The chart below graphically depicts the steadily increasing population density in Brookline over the last fifty years.

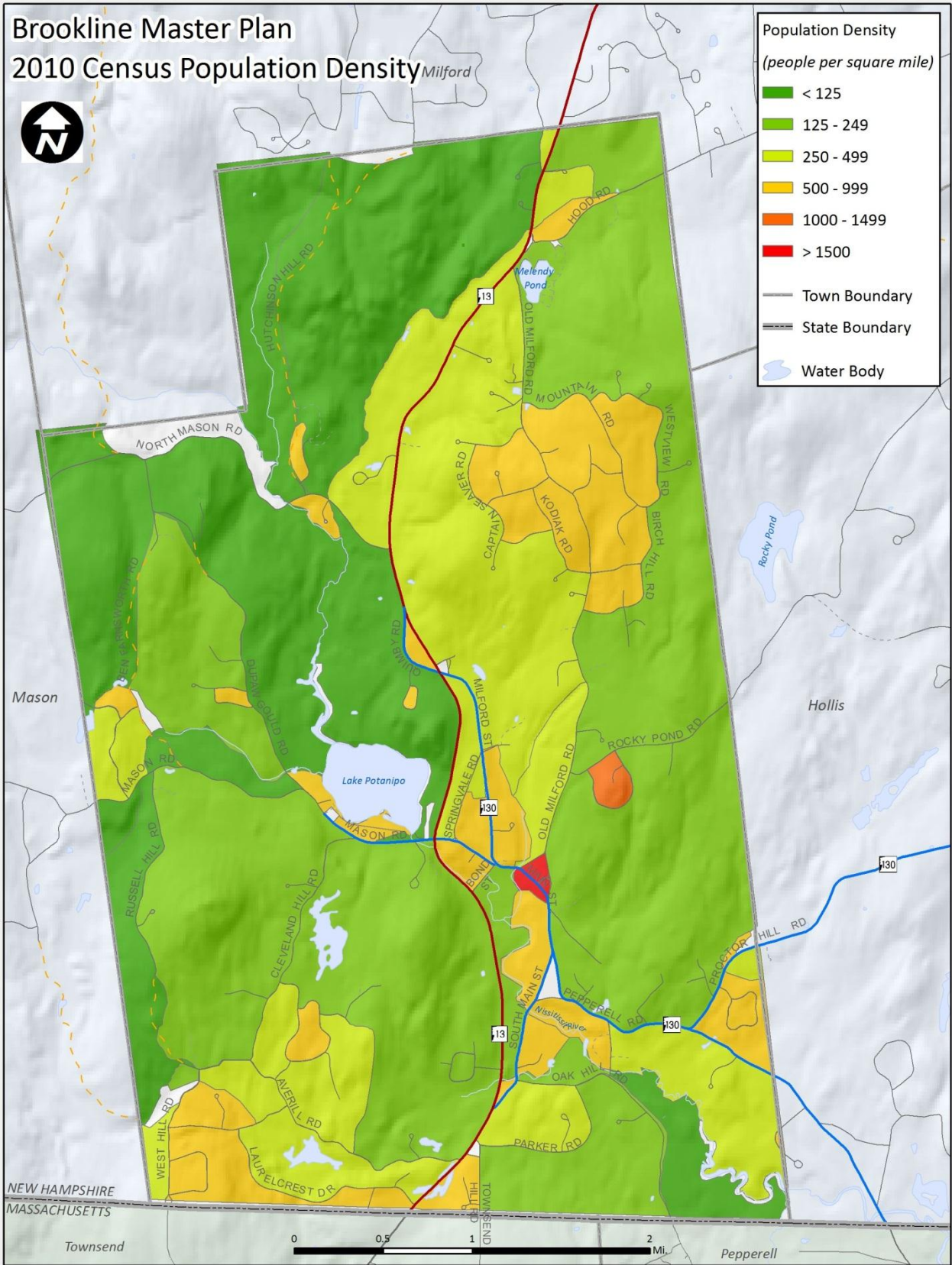
Chart X.5: Brookline Population Density (1970 – 2010)



Source: U.S. Census Bureau Decennial Census

While the overall population density for the entire town is 252 people per square mile, there are pockets of higher densities in the downtown area as well as within residential developments located throughout Town. The following map shows the population density within Brookline based on Census Blocks², which are the smallest geographic units for which the Census Bureau reports data.

² The US Census Bureau collects and reports data for a wide variety of geographic types, ranging from the entire United States down to the Census Block, which is the smallest geographic unit for which the Census Bureau reports data. A map of Brookline showing the three commonly used geographies for which data is reported at the town level is included Section 6 – References.



While its population density has been increasing, Brookline may still be characterized as a low-density environment when compared to other communities in the region, as shown on Table X.7 below and the associated chart.

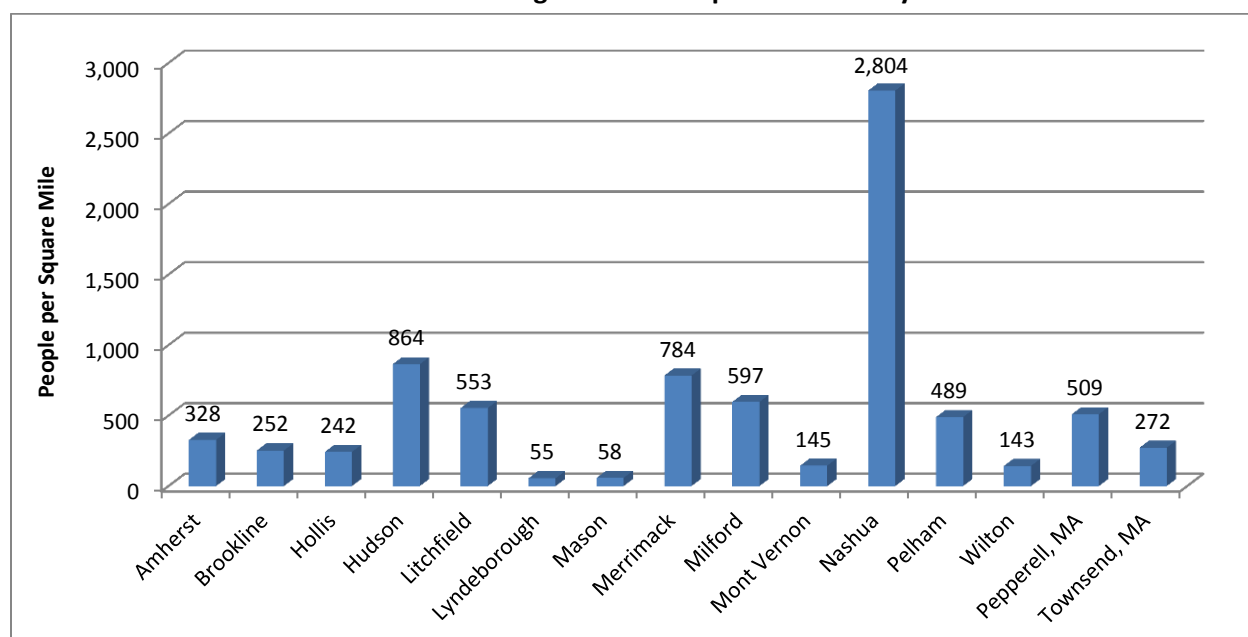
Table X.7: Regional Population Density (1970 – 2010)

(People per Square Mile)

Community	Land Area (square miles)	1970	1980	1990	2000	2010
Amherst	34.2	134.7	241.1	265.2	315.0	327.6
Brookline	19.8	59.0	89.3	121.9	211.4	252.4
Hollis	31.8	82.4	147.3	179.6	220.9	241.9
Hudson	28.3	375.6	495.1	689.6	809.6	864.0
Litchfield	15.0	95.0	277.6	368.9	492.3	553.2
Lyndeborough	30.4	25.9	35.2	42.5	52.1	55.3
Mason	23.9	21.7	33.1	50.7	48.0	57.8
Merrimack	32.5	264.2	473.6	681.1	772.2	783.7
Milford	25.3	261.5	343.0	465.8	534.6	597.0
Mont Vernon	16.6	54.5	86.9	109.0	122.4	145.0
Nashua	30.9	1,809.4	2,199.8	2,582.2	2,807.3	2,803.7
Pelham	26.4	205.1	306.8	356.8	413.9	489.1
Wilton	25.8	88.4	103.6	121.2	145.4	142.8
Pepperell, MA	22.6	260.5	356.7	446.8	493.0	508.7
Townsend, MA	32.8	130.5	219.5	259.0	280.4	272.1

Source: U.S. Census Bureau Decennial Census

Chart X.6: Regional 2010 Population Density



Source: U.S. Census Bureau Decennial Census

SECTION 5—CHARACTERISTICS OF THE POPULATION

5.1 ~ Age Distribution

The age distribution of the population within a community can reveal the needs of the community and help plan for the future. For example, a high percentage of children under age four can indicate the need for school expansion and can be used to help program recreational opportunities within the community.

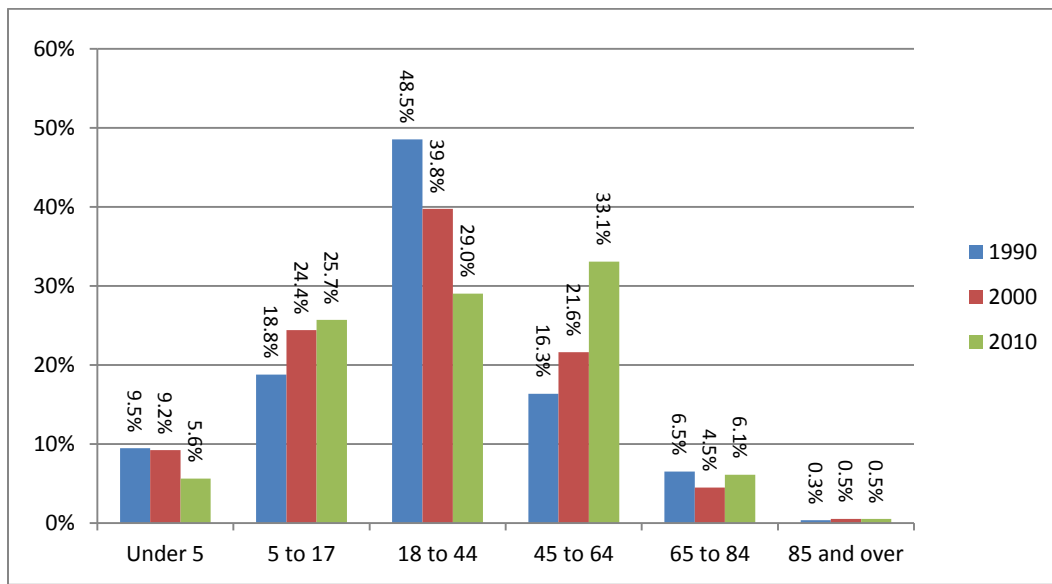
Table X.6 and the associated chart show the historical trends of age distribution in Brookline. The age group with the highest percentage of the population in both 1990 and 2000 was the 18 to 44 year olds. In line with State and national trends, the 2010 Census showed the age group with the highest percentage of the population is the 45 to 64 group. The population between 18 and 64 is generally considered the “working age population;” in 2000, 61.4% of the population fell into this category and in 2010, the percentage was similar, at 62.1%. However, within that working age population, there is a lower percentage of residents in the 18 – 44 age group, generally considered the child-bearing years; in 2000, nearly 40% of the population was in that group, as compared to 29% in the 2010 Census. A comparison of the gender split within that age group shows a 5% decrease in the percent of women of child bearing age between 2000 and 2010 (see Charts X.8a and X.8b). Coinciding with that decrease, the percentage of the total population under 5 years old has decreased significantly. In the decade between 1990 and 2000, there were 614 births per 4,181 residents (0.15 per capita); between 2000 and 2010, there were fewer births, 541, per a higher population, 4,991 (0.11 births per capita).

While the data indicate that the large influx of younger in-migrants to Brookline in the 1990s reduced the overall percentage of the population 65 and over counted in the 2000 Census, those percentages have rebounded back to 1990 values.

Table X.8: Brookline Age Distribution (1990 – 2010)

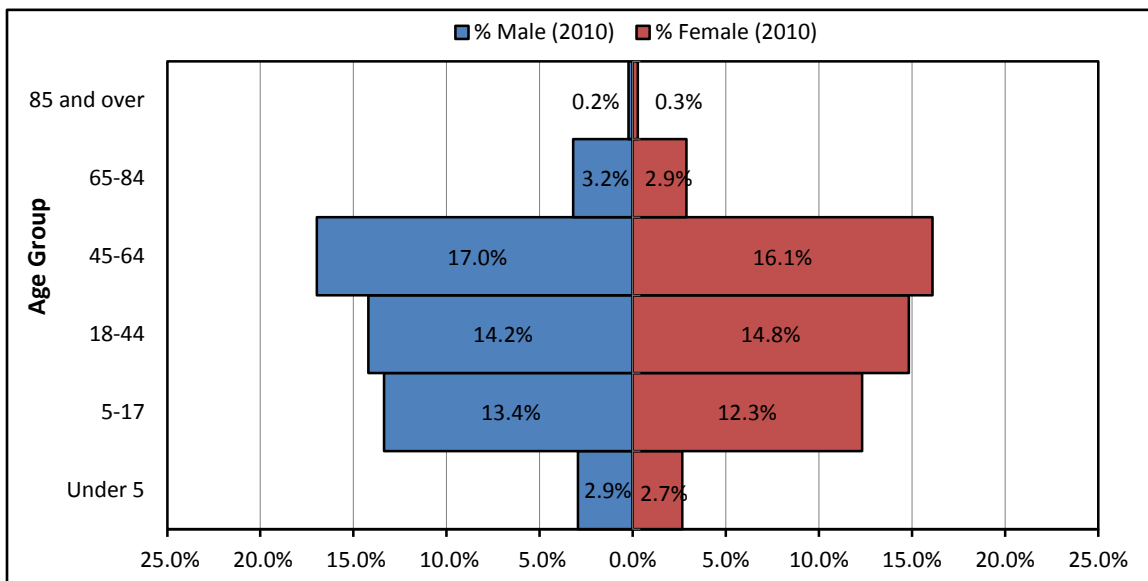
Age	1990		2000		2010	
	Count	%	Count	%	Count	%
Under 5	228	9.5%	385	9.2%	280	5.6%
5 to 17	453	18.8%	1,021	24.4%	1,282	25.7%
18 to 44	1,170	48.5%	1,662	39.8%	1,449	29.0%
45 to 64	394	16.3%	904	21.6%	1,651	33.1%
65 to 84	157	6.5%	187	4.5%	304	6.1%
85 and over	8	0.3%	22	0.5%	25	0.5%
Total:	2,410		4,181		4,991	

Source: U.S. Census Bureau Decennial Census

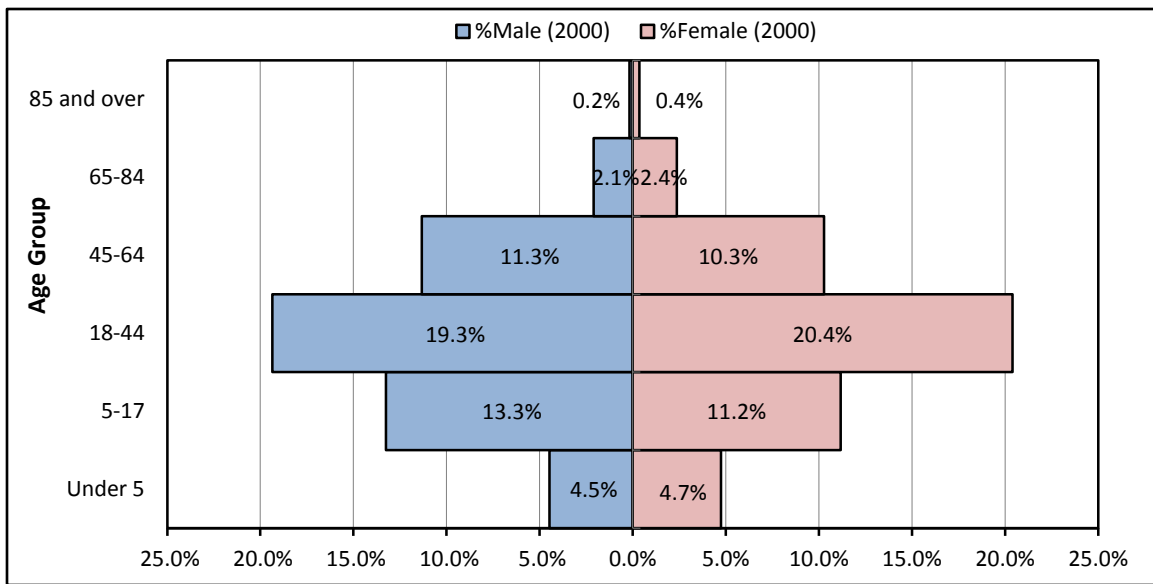
Chart X.7: Brookline Age Distribution (1990 – 2010)

Source: U.S. Census Bureau Decennial Census

According to the 2010 Census, Brookline's population is comprised of 50.9% males and 49.1% females; the 2000 Census showed the population was 50.7% male and 49.3% female. The following population pyramids show how the 2000 and 2010 population in Brookline was distributed by gender within each of the age groups discussed above.

Chart X.8a: Brookline 2010 Census Population Age Distribution by Gender

Source: U.S. Census Bureau Decennial Census

Chart X.8b: Brookline 2000 Census Population Age Distribution by Gender

Source: U.S. Census Bureau Decennial Census

Table X.9 shows the Brookline age distribution in 2010 compared to that of other regional communities, Hillsborough County, and New Hampshire. Brookline stands out as having a higher percentage of its population in the 5 – 17 age group, and a lower percent of its population over 65. Again, this is indicative of the influx of young families that made Brookline their home in the 1990s and whose children are now school-age.

Table X.9: Regional 2010 Census Age Distribution

Community	Under 5		5 to 17		18 to 44		45 to 64		65 to 84		85 and over	
	Count	%	Count	%	Count	%	Count	%	Count	%	Count	%
Amherst	552	4.9%	2,365	21.1%	2,810	25.1%	4,072	36.4%	1,312	11.7%	90	0.8%
Brookline	280	5.6%	1,282	25.7%	1,449	29.0%	1,651	33.1%	304	6.1%	25	0.5%
Hollis	296	3.9%	1,637	21.3%	1,668	21.7%	3,011	39.2%	969	12.6%	103	1.3%
Hudson	1,441	5.9%	4,654	19.0%	8,510	34.8%	7,269	29.7%	2,274	9.3%	319	1.3%
Litchfield	442	5.3%	1,853	22.4%	2,635	31.9%	2,647	32.0%	653	7.9%	41	0.5%
Lyndeborough	67	4.0%	284	16.9%	493	29.3%	620	36.8%	208	12.4%	11	0.7%
Mason	58	4.2%	242	17.5%	397	28.7%	551	39.9%	127	9.2%	7	0.5%
Merrimack	1,368	5.4%	4,889	19.2%	8,266	32.4%	8,333	32.7%	2,430	9.5%	208	0.8%
Milford	898	5.9%	2,878	19.0%	5,260	34.8%	4,283	28.3%	1,551	10.3%	245	1.6%
Mont Vernon	100	4.2%	548	22.7%	646	26.8%	870	36.1%	228	9.5%	17	0.7%
Nashua	5,472	6.3%	13,659	15.8%	32,333	37.4%	24,051	27.8%	9,375	10.8%	1,604	1.9%
Pelham	729	5.7%	2,612	20.3%	4,141	32.1%	4,057	31.5%	1,227	9.5%	131	1.0%
Wilton	195	5.3%	669	18.2%	1,140	31.0%	1,237	33.6%	388	10.6%	48	1.3%
Pepperell, MA	594	5.2%	2,298	20.0%	3,506	30.5%	3,976	34.6%	999	8.7%	124	1.1%
Townsend, MA	449	5.0%	1,774	19.9%	2,741	30.7%	3,106	34.8%	769	8.6%	87	1.0%
NRPC Region	11,898	5.8%	37,572	18.3%	69,748	33.9%	62,652	30.4%	21,046	10.2%	2,849	1.4%
Hillsborough Co.	23,824	5.9%	70,258	17.5%	141,121	35.2%	117,991	29.4%	40,679	10.2%	6,848	1.7%
New Hampshire	69,806	5.3%	217,428	16.5%	446,764	33.9%	404,204	30.7%	153,507	11.7%	24,761	1.9%

Source: U.S. Census Bureau Decennial Census

With a higher percentage of the population in the 45- 64 and the 65 and over group, the median age within Brookline has increased over the last three decades, as shown in Table X.10. While that median age is nearly 7 years older than in 1990, Brookline still has one of the younger median ages in the region at 39.4, with only Milford (39.0) and Nashua (38.5) having lower values.

Table X.10: Regional Median Age

Community	Median Age			
	1990	2000	2010	Δ 90-
Amherst	36.0	38.7	44.4	8.4
Brookline	32.6	35.7	39.4	6.8
Hollis	37.0	39.6	46.3	9.3
Hudson	31.0	35.4	39.6	8.6
Litchfield	29.9	33.2	40.1	10.2
Lyndeborough	34.2	37.9	44.9	10.7
Mason	34.8	39.9	44.7	9.9
Merrimack	31.2	36.0	40.7	9.5
Milford	31.1	35.1	39.0	7.9
Mont Vernon	33.9	38.5	43.2	9.3
Nashua	31.9	35.8	38.5	6.6
Pelham	32.0	36.0	40.7	8.7
Wilton	33.7	37.4	42.1	8.4
Pepperell, MA	31.2	35.3	41.6	10.4
Townsend, MA	31.3	35.4	41.7	10.4
Hillsborough County	32.1	35.9	39.3	7.2
New Hampshire	32.8	37.1	41.1	8.3

Source: U.S. Census Bureau Decennial Census

5.2 ~Race and Ethnicity

Race and ethnicity data for the region are provided in Tables X.11 and X.12, respectively. Race and Hispanic origin are considered two separate concepts by the US Census Bureau, and therefore, Hispanics may be of any race or races. Race categories used by the 2010 Census are White alone, Black or African American alone, American Indian or Alaska Native alone, Asian alone, Native Hawaiian or Other Pacific Islander alone, Some Other Race alone, and Two or More Races. “Hispanic or Latino” refers to a person of Cuban, Mexican, Puerto Rican, South or Central American, or other Spanish culture or origin regardless of race.

Brookline’s population is predominantly white and not Hispanic. This is consistent with surrounding communities with the exception of the City of Nashua, which has higher percentages of non-whites and Hispanics and therefore has a significant impact on the regional percentages shown in the tables below. Excluding Nashua, the percentage of the region that categorizes themselves as white only is 95.1% and the percentage that categorizes themselves as not Hispanic is 97.9%.

Table X.11: Regional 2010 Census Race

Community	One Race Only						Two or More Races
	White	Black or African American	American Indian or Alaska Native	Asian	Native Hawaiian or Other Pacific Islander	Some Other Race	
Amherst	95.8%	0.5%	0.1%	1.7%	0.0%	0.4%	1.5%
Brookline	96.5%	0.3%	0.2%	1.2%	0.0%	0.2%	1.6%
Hollis	95.2%	0.5%	0.1%	2.4%	0.0%	0.2%	1.6%
Hudson	93.0%	1.4%	0.1%	3.0%	0.0%	0.9%	1.6%
Litchfield	96.4%	0.7%	0.4%	0.8%	0.0%	0.5%	1.2%
Lyndeborough	94.7%	0.8%	0.3%	0.8%	0.0%	0.8%	2.5%
Mason	98.3%	0.1%	0.0%	0.7%	0.0%	0.2%	0.7%
Merrimack	95.0%	0.8%	0.2%	2.0%	0.0%	0.5%	1.6%
Milford	94.8%	1.3%	0.2%	1.3%	0.0%	0.6%	1.7%
Mont Vernon	97.3%	0.4%	0.2%	0.8%	0.0%	0.0%	1.3%
Nashua	83.4%	2.7%	0.3%	6.5%	0.0%	4.6%	2.5%
Pelham	96.0%	0.6%	0.1%	1.7%	0.0%	0.5%	1.0%
Wilton	97.1%	0.5%	0.2%	0.5%	0.0%	0.2%	1.5%
Pepperell, MA	96.4%	0.5%	0.2%	1.2%	0.0%	0.4%	1.4%
Townsend, MA	96.6%	0.6%	0.2%	0.8%	0.0%	0.4%	1.3%
Region	90.2%	1.6%	0.2%	3.8%	0.0%	2.2%	1.9%
Hillsborough County	90.4%	2.1%	0.2%	3.2%	0.0%	2.1%	2.0%
New Hampshire	93.9%	1.1%	0.2%	2.2%	0.0%	0.9%	1.6%

Source: U.S. Census Bureau Decennial Census

Table X.12: Regional 2010 Census Ethnicity

Community	Not Hispanic	Hispanic
Amherst	98.1%	1.9%
Brookline	98.0%	2.0%
Hollis	98.8%	1.2%
Hudson	97.1%	2.9%
Litchfield	98.0%	2.0%
Lyndeborough	98.4%	1.6%
Mason	98.9%	1.1%
Merrimack	97.9%	2.1%
Milford	97.8%	2.2%
Mont Vernon	98.5%	1.5%
Nashua	90.2%	9.8%
Pelham	98.1%	1.9%
Wilton	98.6%	1.4%
Pepperell, MA	98.3%	1.7%
Townsend, MA	98.2%	1.8%
Region	94.6%	5.4%
Hillsborough County	94.7%	5.3%
New Hampshire	97.2%	2.8%

Source: U.S. Census Bureau Decennial Census

5.3 ~ Education

Estimates of the educational attainment of Brookline's residents are provided in Table X.13. Over the last thirty years, the Town's population is has become increasingly well-educated; the number of residents lacking a high school degree has dropped while those possessing post-secondary education has grown. Compared to the regional percentages in Table X.14, Brookline residents have completed more coursework past high school than residents of most other communities in the area. Most notable is the fact that Brookline has the second lowest percentage of its residents without a high-school diploma and the third highest percentage of residents with a bachelor's degree or higher.

Table X.13: Brookline Educational Attainment for the Population 18 years and Older (1990 – 2010)

Educational Attainment(for the 18+ population)	1990		2000		2010	
	Count	%	Count	%	Count	%
No High School Diploma	192	11.1%	222	7.9%	146	4.3%
High School Graduate	484	28.0%	576	20.6%	771	22.9%
Some College, No Degree	363	21.0%	585	20.9%	588	17.5%
Associate's Degree	175	10.1%	319	11.4%	302	9.0%
Bachelor's Degree	340	19.7%	785	28.1%	994	29.6%
Graduate or Professional Degree	176	10.2%	308	11.0%	561	16.7%
Total:	1,730		2,795		3,362	

Source: U.S. Census Bureau U.S. Census Bureau Decennial Census (1990 and 2000, "long-form" estimates) and 2006 – 2010 ACS 5-Year Estimates (2010)

Table X.14: Regional Educational Attainment for the Population 18 years and Older

Community	No High School Diploma	High School Graduate	Some College, No Degree	Associate's Degree	Bachelor's Degree	Graduate or Professional Degree
Amherst	5.6%	13.3%	15.6%	7.6%	36.6%	21.3%
Brookline	4.3%	22.9%	17.5%	9.0%	29.6%	16.7%
Hollis	3.8%	14.0%	13.4%	7.7%	33.0%	28.1%
Hudson	7.0%	29.4%	22.5%	9.9%	21.3%	9.9%
Litchfield	6.3%	23.5%	25.0%	11.8%	22.1%	11.4%
Lyndeborough	9.7%	37.2%	16.8%	7.8%	22.6%	5.9%
Mason	8.1%	23.0%	22.8%	8.4%	25.0%	12.8%
Merrimack	7.5%	24.7%	17.8%	11.4%	27.2%	11.4%
Milford	8.0%	30.5%	21.1%	10.8%	20.8%	8.7%
Mont Vernon	6.1%	22.0%	20.0%	6.2%	25.4%	20.3%
Nashua	10.4%	27.4%	21.4%	8.5%	21.2%	11.1%
Pelham	7.5%	34.1%	22.0%	8.9%	20.0%	7.4%
Wilton	8.4%	29.9%	15.0%	8.9%	23.5%	14.3%
Pepperell, MA	6.7%	27.8%	18.5%	11.0%	23.4%	12.6%
Townsend, MA	9.9%	31.6%	21.6%	10.0%	19.9%	6.9%
NRPC Region	8.4%	26.8%	20.4%	9.4%	23.3%	11.8%
Hillsborough County	10.1%	28.2%	20.6%	8.9%	21.3%	10.8%
New Hampshire	9.5%	30.0%	21.3%	9.0%	19.7%	10.5%

Source: 2006 – 2010 ACS 5-Year Estimates

5.4 ~ Persons with Disabilities

Data on persons with disabilities are collected by the US Census Bureau through the American Community Survey. At this time, the 5-year estimates of persons with disabilities, which are published for areas with populations of less than 20,000, are not available due to changes in the disability questions in 2008. The first 5-year estimates for persons with disabilities should be available in 2013

with the release of the 2008-2012 ACS data. This section of this chapter should be completed when that data is released.

SECTION 6—REFERENCES

The US Census Bureau's American Fact Finder website was used to download data displayed in this chapter. The website is: <http://factfinder2.census.gov/faces/nav/jsf/pages/index.xhtml>

- To search for town level data, enter a town name in the geography search box. For Brookline, the geography to select is: Brookline town, Hillsborough County, New Hampshire, Geography Type = County Subdivision.
- Datasets can be selected under "Topics → Dataset." For 2010 Census data, the dataset is: 2010 SF1 100% Data. For 2006 – 2010 ACS 5-Year Estimates, the dataset is: 2010 ACS 5-year estimates.
- After those options are selected, enter the table number from the table below or select topics of interest from the "Topics" option. Query results may be downloaded as spreadsheets for using in calculations, formatting, etc.

Master Plan Table or Chart	Data Source(s)	Data Source Table*
Table X.1: 100 Years of Population Counts (1910-2010)	US Census Bureau Decennial Census Summary File 1	P1: Total Population
Chart X.1: % Change in Census Population (1910-2010)		
Table X.2: Regional Population Trends (1960-2010)	US Census Bureau Decennial Census Summary File 1	P1: Total Population
Chart X.2: Brookline Births and Deaths (1970 – 2009)	NH Department of Health and Human Services (DHHS) Health Statistics and Data Management Section	Requested data from NH DHHS; can be updated with local information published annually in Town Report
Table X.3: Brookline Population Growth: Migration vs. Natural Increase (1970 – 2010)	US Census Bureau Decennial Census Summary File 1	P1: Total Population
Chart X.3: Brookline Population Growth (1970 – 2010)	NH DHHS Health Statistics and Data Management Section	See note for Chart X.2
Table X.4: Regional Population Growth: Migration vs. Natural Increase (1990 – 2010)		
Table X.5: Brookline Population Projections (2015 – 2040)	Nashua Regional Planning Commission (NRPC) Population Projection Model	Maintained by NRPC
Chart X.4: Brookline Actual (1940 – 2010) and Projected (2020 – 2040) Population	NH DHHS Health Statistics and Data Management Section	See note for Chart X.2
Table X.6: Regional Population Projections (2015 – 2040)		
Chart X.5: Brookline Population Density (1970 – 2010)	US Census Bureau Decennial Census Summary File 1	P1: Total Population
Table X.7: Regional Population Density (1970 – 2010)		G001: Geographic Identifiers
Chart X.6: Regional 2010 Population Density		

Master Plan Table or Chart	Data Source(s)	Data Source Table*
Table X.8: Brookline Age Distribution (1990 – 2010)	US Census Bureau Decennial Census Summary File 1	P12: Sex by Age
Chart X.7: Brookline Age Distribution (1990 – 2010)		
Chart X.8a: Brookline 2010 Census Population Age Distribution by Gender		
Chart X.8b: Brookline 2000 Census Population Age Distribution by Gender		
Table X.9: Regional 2010 Census Age Distribution		
Table X.10: Regional Median Age	US Census Bureau Decennial Census Summary File 1	P13: Median Age by Sex
Table X.11: Regional Race	US Census Bureau Decennial Census Summary File 1	P3: Race
Table X.12: Regional 2010 Census Ethnicity	US Census Bureau Decennial Census Summary File 1	P4: Hispanic or Latino Origin
Table X.13: Brookline Educational Attainment for the Population 18 years and Older (1990 – 2010)	2006-2010 American Community Survey 5-Year Estimates	B15001: Sex by Age by Educational Attainment for the Population 18 Years and Over
Table X.14: Regional Educational Attainment for the Population 18 years and Older		

* This information is intended to assist with updating the demographic tables used in this chapter as new data is made available. Therefore, the data source tables are those that were used for current (2010) data only; Census Bureau data used to compile 2000 and earlier data may have different table numbers.

